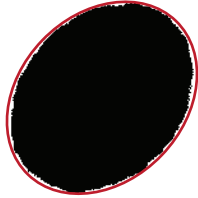
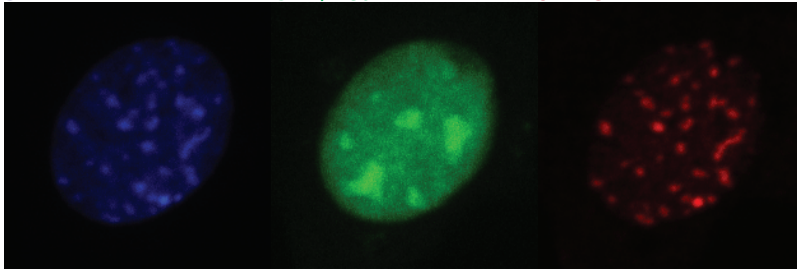


Load image and create maximum projection Z-stack

DAPI

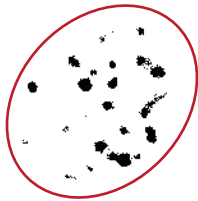
GFP / Tet1-X

5hmC



Create binary nucleus mask in DAPI channel
intensity [AU] < 3000, Triangle method

measure 5hmC levels in mask area



Create binary chromocenter mask in DAPI channel
intensity [AU] < 7000, Triangle method

measure 5hmC levels in mask area



Calculate 5hmC levels in nucleoplasm
and plot intensity values of
nucleoplasm and chromocenters